



Issue 9 # 25

Shedding Endeavors

22nd June 2025

Shed is open Mon to Sat 10.00am to 3.00pm

President – Doug Rowley

president@ehms.org.au

Vice President – Ronald Sterling

principalservices@gmail.com

Secretary - Paul Morris

secretary@ehms.org.au

Treasurer – John Thornton

treasurer@ehms.org.au

Almoner – Doug Rowley

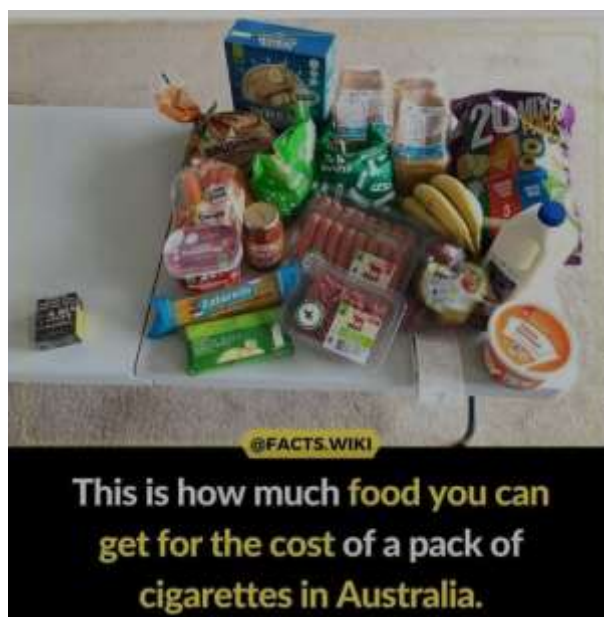
yelwor1946@gmail.com

Editor *pro tem*:

Will Beattie

wlbeattie@bigpond.com

03 9700-7795



As you ramble on through life, brother, whatever be your goal:
keep you eyes upon the doughnut, and not upon the hole.

June Birthdays

5 Stan Ashley

9 Ray Stewart

12 Hans Van Dyk

15 Viti Occhipinti

18 Adi Bhimireddy

19 Brian Oates

19 Cheong Koo

24 Bob Daley

Cleaning Roster

Garrick Williams-Toilets

(Dunny Master)

Len Follett 24 June

Louis Zhararopoulos

Mark Wittman. 01 July

Peter Wallace

Stan Ashley 08 July

Tony Brosinsky

Tony Rotunno. 15 July

Vin Wragg

Bruce Latham 22 July

Bruno

Howard De Zylva 29 July

Laurens Gordyn

Recent Tuesday Topics

Well what sticks in my mind from last Tuesdays' events is the number of apologies ...

The Great Debacle (Debate EHMS Style)

John G & Derek P dispute Life, The Universe & Everything aka (I've forgotten)

Anyway, Adjudicator **Judge Bob Daly** solved the conundrum of "Who Won" with:-
an undisputed **Nil : Nil Draw**



I remember only 2 x things "**Big Breaths**" and "**4 x Candles**".

But I did learn that I should have watched the 2 x Ronnies a bit more often!

It was also good to see **Bruno** back cooking snags and Limping **Louie** with his new knee and associated scars! Speaking of which **Laury G.** has a few of his own too.

I was pleased to meet **Ron Perrin** (possibly our oldest member) who doesn't have an email address – but El Presidento **Doug Rowley**, has promised to have a couple of printed copies of this bulletin for those members to read at the Shed.

* EHMS Special Interest Groups *

Laury Gordyn has submitted this interesting Tech Snippet

Coding for the model railway enthusiast.

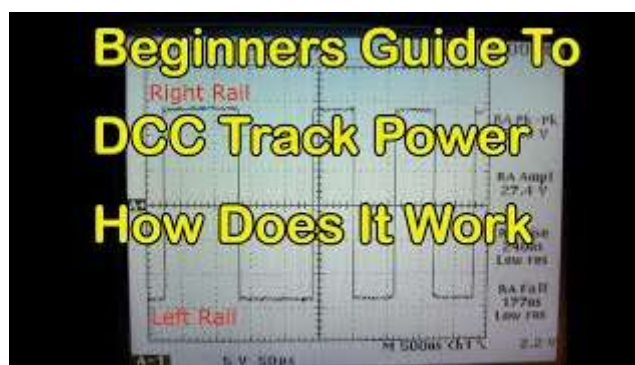
DCC (Digital Command Control) allows for multiple trains to be controlled independently on the same track by sending digital signals to individual locomotives. Instead of controlling the track voltage to change a train's speed, DCC sends digital commands to a decoder inside the locomotive. These commands are sent via the track and interpreted by the decoder to control the motor, lights, and other functions.

Here's a more detailed breakdown:

1. **Command Station:** This is the central hub of the DCC system. It receives instructions from the throttle (controller) and translates them into digital packets.
2. **Digital Packets:** The command station creates digital packets containing the address of the locomotive and the desired action (speed, direction, lights, etc.).
3. **Booster:** The booster amplifies the digital signal and sends it to the track.
4. **Track:** The track acts as the data bus, delivering the digital signal to the locomotives.
5. **Decoders:** Each locomotive has a decoder, which is a microchip programmed with a unique address.
6. **Decoding:** The decoder in each locomotive monitors the track for commands addressed to it. When it receives a command, it interprets the packet and controls the locomotive accordingly.

Essentially, DCC replaces the traditional analog control of model trains with a digital system that allows for more precise and flexible control of multiple locomotives simultaneously.

This video explains the basics of DCC for model railroads, including track power, and how it works:



Youtube Link: <https://www.youtube.com/watch?v=rMGtZ4mxCo8&t=79s>

**Ian Cole: “TRESTLED” IN NOOJEE.
E.H.M.S. Shed Group Visit to Noojee 19/6/25.**

If you were lucky enough to be one of the 19 (actual total attended was 20) who joined me on the afternoons adventure you will realise that what is written below bears only a very slight correlation to the events that actually occurred as the day unfolded.

To all the other Shed members who stayed home read on.....

With that the out of the way, apologies were received from Will and his wife as the dreaded “lurgy” had reared its head in the household so, Will had to take up the mothering duties.....we all hope Will prevails quickly.

Shed arrival time was 9 / 9.20 am and as Wal and I (Ian) rocked up most members were already there and in great spirits as we sorted ourselves out and filled the car seats up.

Wonder of wonders we were actually clearing the gates before time and were off to do battle with the early traffic.

Yarragon came up quickly then we were off for a quick coffee before exploring the town. Luck was on our side as we entered almost together into the one large coffee shop so, it was easy to plot the next move.

It was decided to relieve Vin’s “rail tension”, thus with this aim in mind, we would congregate at 11.25 in front of the old engine for a group shot.



The sun was at our backs, we had been to the “*olde lolly shop*”, had a coffee, checked out the gift shops, cursed because our legs and back hurt as we were keep standing well past 11.25 because some shoppers can never resist a bargain.....read what you want into this sexist notation.

Howard took a few pics with Vin following up with several photographs and we were done, dusted, and off to Noojee or so I thought.

My Navman had a hiccup and caused my blood pressure to rise for a while but once dependable Wal had an old-fashioned map in his hands the Navman very quickly decided to behave or be de-battered.

The road into Noojee is motorbike territory so we all strung out a little on the way there with Tony R being rated the best winger of all the drivers as to road condition and the 1000 turns he had to navigate up and down steep hills.

I think its is called the Strzelecki Mountain Range but I could be wrong.

Scuttlebutt tells us that Tony after all is a “flat earther” anyway.



If you had a few old cars and bikes with no wife to nag you, the Toolshed set up is pure heaven spread over a few acres.



I enjoyed watching the many parrots having a feed as I walked past the old broken-down trucks and Bric a Brac to the entrance area.

Everything had a place with nothing wasted but kept for maybe a future emergency.

Inside it was just super and if I was Dr Who my TARDIS would look just like the interior of the Toolshed which was in fact a dry version of the exterior and surrounds.



We the EHMS members are blessed with Vin for professional pics and Howard the happy snaps so when viewed together they can present to you what a wonderful venue this is and the fun day that was enjoyed by all who ventured into the unknown.



The header states “TRESTLED” because the entrance to both sides of the famous bridge were blocked for restoration of the bridge area so it was a no go.

We were trestled!!!!

Since I received no SOS calls I assume all got home safely.

My suggestion is to schedule again when the bridge is open and resample the Toolshed atmosphere.

A.J's Sorcerer's Apprentice :- Ian

A tad more superfluous information

Notable absentees not on the Principal's Roll were the Principal himself, his wife Lorraine, my wife Yvonne and Jan, Wal's wife

All had approved absentee slips for the day.



From Noojee, centre of disastrous fires, in which at least forty-five homes were completely annihilated, comes this striking picture of the twisted ruins of this 90-foot railway bridge. When this photograph was taken the bridge was still burning and the first rescue party to the district had just arrived on the spot.

Odd Bods at the EHMS (Thanks to Howard)



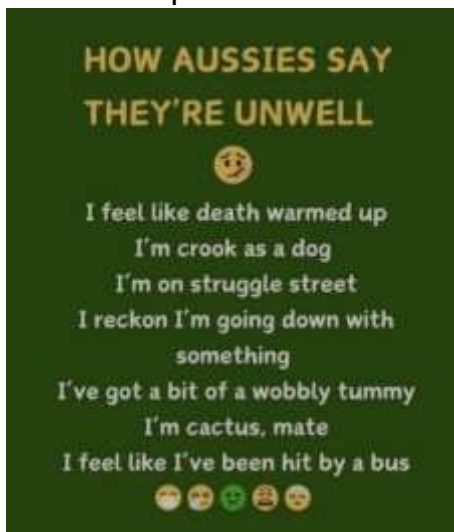
The Sausage Gaggle



The Treasurer has a new set of clothes?

Ron Sterling fails to write a “Thursday In the Shed” Update

Unfortunately, Ron is still recovering from his mishap! No doubt some of Ian’s jokes may cheer him up! Get well soon mate!



Rogues of the Week (The Terrible Twins + Judge!)

John G and **Derek P** – your words are forever engraved in our memories?
Does anyone remember what they were supposed to be debating ??



Photo Courtesy of the EHMS’s biggest Troublemaker!
(Howard d S – who has a sense of humour, unlike some.)